



## Pressacavo per flexible cords

### Cable glands for flexible cords

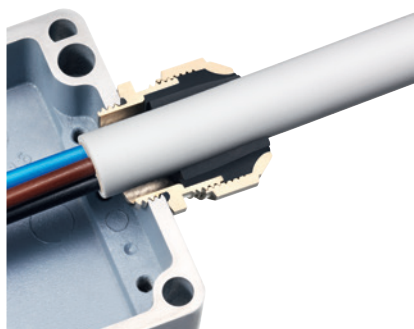
"UL/CSA Listed"



### Impiego - Use

Linea di pressacavo metallici in ottone nichelato costituiti da una guarnizione a doppio elemento che permette un ampio range di accoppiamento. Sono caratterizzati da un grado di protezione IP 68 e NEMA 4X e sono adatti all'impiego in zone a pericolo di esplosione secondo il NFPA 70 (NEC). Questi pressacavo sono certificati in accordo alla norma EN 45545-2 per applicazioni in ambito ferroviario.

*Nickel plated brass cable glands made by a double layer seals to allow a wide range of diameters. They are IP 68 and NEMA 4X protection class and suitable for use in hazardous location according to NFPA 70 (NEC). These cable glands are certified for rail applications according to EN 45545-2.*



### Dati tecnici - Technical data

Caratteristica - Characteristics	Valore/proprietà - Value/property
Materiale <i>Material</i>	Ottone nichelato o Acciaio inossidabile AISI 316 <i>Nickel-plated brass or AISI 316 Stainless Steel</i>
Materiale della guarnizione <i>Sealing ring material</i>	EPDM Classe V0, elemento doppio <i>EPDM Class V0, two-piece</i>
Cavi compatibili <i>Compatible cables</i>	Flexible cords (extra-hard). Tabella di accoppiamento cavo/pressacavo in Appendice R4. <i>Flexible cords (extra-hard). Cable/cable gland matching table in Appendix R4.</i>
Temperatura di esercizio <i>Temperature range</i>	-45°C, +105°C
Grado di protezione <i>Protection class</i>	IP 68, NEMA 4X
Riferimenti normativi costruttivi <i>Standards of construction</i>	NEMA 250, UL 514B (ccn QCRV, QCRV2, QCRV7, QCRV8) CSA C22.2 N. 18.3
Riferimenti normativi di impiego <i>Standards of use</i>	EN 45545-2 HL1, HL2, HL3, R22, R23 NFPA 70, NFPA 79, UL 508a CSA C22.1 (CE Code), CSA C22.2 N.301, CSA C22.2 N.286 NEMA 250, UL 514B, CSA C22.2 N.18.3 c(UL)us: NFPA 70 (NEC) Art. 501.10 (B) (2) Class I Div. 2, Art. 502.10 (A) (2) and (B) (2) Class II, Div. 1 and 2, Art. 503.10 (A) (3) Class III Div. 1 and 2

### Codifiche e dimensioni - Coding and dimensions

#### Pressacavo diritto - Straight cable gland

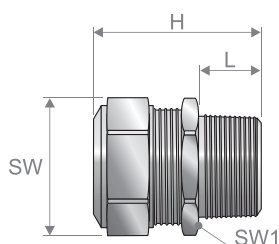


Fig. 1  
Versione metrica  
*Metric version*

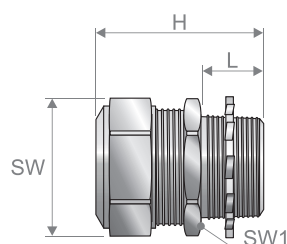
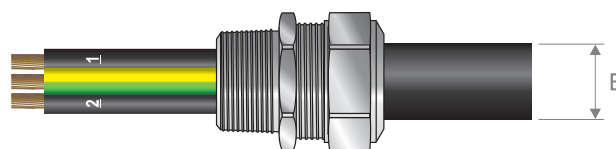


Fig. 2  
Versione NPT  
*NPT version*



B = Diametro esterno del cavo/Overall cable diameter

Codice <i>Code</i>	Versione <i>Version</i>	Filetto <i>Thread</i>	Numero di elementi della guarnizione <i>Number of pieces of sealing ring</i>	Chiave di serraggio <i>Tightening key</i>		Diametro del cavo B <i>Cable diameter B</i> Min/Max [mm]	Dimensioni <i>Sizes [mm]</i>		Confezione <i>Packaging [pz]</i>
				SW	SW1		H	L	
AN736.716.1 <sup>(1)</sup>	NPB	M16x1,5	2	17	18	4,0÷6,5÷8,5	32	10	10
AN736.717.1 <sup>(2)</sup>	NPB	M20x1,5	2	17	22	4,0÷6,5÷8,5	32	10	10
AN736.720.1 <sup>(2)</sup>	NPB	M20x1,5	2	22	22	6,0÷9,0÷12,0	35	10	10
AN736.722.1 <sup>(2)</sup>	NPB	M25x1,5	2	22	27	6,0÷9,0÷12,0	36	10	5
AN736.725.1 <sup>(2)</sup>	NPB	M25x1,5	2	27	27	10,5÷14,0÷17,0	38	10	5
AN736.728.1 <sup>(2)</sup>	NPB	M32x1,5	2	27	35	10,5÷14,0÷17,0	40	12	5
AN736.732.1 <sup>(2)</sup>	NPB	M32x1,5	2	35	35	15,5÷20,0÷24,0	42	12	5

Codice Code	Versione Version	Filetto Thread	Numero di elementi della guarnizione Number of pieces of sealing ring	Chiave di serraggio Tightening key		Diametro del cavo B Cable diameter B Min/Med <sup>3)</sup> /Max [mm]	Dimensioni Sizes [mm]		Confezione Packaging [pz]
				SW	SW1		H	L	
AN736.735.1 <sup>(2)</sup>	NPB	M40x1,5	2	35	43	15,5÷20,0÷24,0	43	13	2
AN736.740.1 <sup>(2)</sup>	NPB	M40x1,5	2	43	43	22,0÷27,0÷31,0	45	13	2
AN736.745.1 <sup>(2)</sup>	NPB	M50x1,5	2	43	55	22,0÷27,0÷31,0	46	14	2
AN736.750.1 <sup>(2)</sup>	NPB	M50x1,5	2	53	55	29,5÷35,0÷40,0	50	14	2
AN738.712.2 <sup>(2)</sup>	NPB	NPT 1/2"	2	17	24	4,0÷6,5÷8,5	36	14	10
AN738.716.2 <sup>(2)</sup>	NPB	NPT 1/2"	2	22	24	6,0÷9,0÷12,0	39	14	10
AN738.718.2 <sup>(2)</sup>	NPB	NPT 3/4"	2	22	30	6,0÷9,0÷12,0	40	14	5
AN738.720.2 <sup>(2)</sup>	NPB	NPT 3/4"	2	27	30	10,5÷14,0÷17,0	42	14	5
AN738.723.2 <sup>(2)</sup>	NPB	NPT 1"	2	27	38	10,5÷14,0÷17,0	44	16	5
AN738.726.2 <sup>(2)</sup>	NPB	NPT 1"	2	35	38	15,5÷20,0÷24,0	46	16	5
AN738.730.2 <sup>(2)</sup>	NPB	NPT 1 1/4"	2	35	48	15,5÷20,0÷24,0	46	16	2
AN738.735.2 <sup>(2)</sup>	NPB	NPT 1 1/4"	2	43	48	22,0÷27,0÷31,0	48	16	2
AN738.738.2 <sup>(2)</sup>	NPB	NPT 1 1/2"	2	43	55	22,0÷27,0÷31,0	50	18	2
AN738.740.2 <sup>(2)</sup>	NPB	NPT 1 1/2"	2	53	55	29,5÷35,0÷40,0	64	18	2
AN736.716.9 <sup>(1)</sup>	SS	M16x1,5	2	17	18	4,0÷6,5÷8,5	32	10	10
AN736.717.9 <sup>(2)</sup>	SS	M20x1,5	2	17	22	4,0÷6,5÷8,5	32	10	10
AN736.720.9 <sup>(2)</sup>	SS	M20x1,5	2	22	22	6,0÷9,0÷12,0	35	10	10
AN736.722.9 <sup>(2)</sup>	SS	M25x1,5	2	22	27	6,0÷9,0÷12,0	36	10	5
AN736.725.9 <sup>(2)</sup>	SS	M25x1,5	2	27	27	10,5÷14,0÷17,0	38	10	5
AN736.728.9 <sup>(2)</sup>	SS	M32x1,5	2	27	35	10,5÷14,0÷17,0	40	12	5
AN736.732.9 <sup>(2)</sup>	SS	M32x1,5	2	35	35	15,5÷20,0÷24,0	42	12	5
AN736.735.9 <sup>(2)</sup>	SS	M40x1,5	2	35	43	15,5÷20,0÷24,0	43	13	2
AN736.740.9 <sup>(2)</sup>	SS	M40x1,5	2	43	43	22,0÷27,0÷31,0	45	13	2
AN736.745.9 <sup>(2)</sup>	SS	M50x1,5	2	43	55	22,0÷27,0÷31,0	46	14	2
AN736.750.9 <sup>(2)</sup>	SS	M50x1,5	2	53	55	29,5÷35,0÷40,0	50	14	2
AN738.712.92 <sup>(2)</sup>	SS	NPT 1/2"	2	17	24	4,0÷6,5÷8,5	36	14	10
AN738.716.92 <sup>(2)</sup>	SS	NPT 1/2"	2	22	24	6,0÷9,0÷12,0	39	14	10
AN738.718.92 <sup>(2)</sup>	SS	NPT 3/4"	2	22	30	6,0÷9,0÷12,0	40	14	5
AN738.720.92 <sup>(2)</sup>	SS	NPT 3/4"	2	27	30	10,5÷14,0÷17,0	42	14	5
AN738.723.92 <sup>(2)</sup>	SS	NPT 1"	2	27	38	10,5÷14,0÷17,0	44	16	5
AN738.726.92 <sup>(2)</sup>	SS	NPT 1"	2	35	38	15,5÷20,0÷24,0	46	16	5
AN738.730.92 <sup>(2)</sup>	SS	NPT 1 1/4"	2	35	48	15,5÷20,0÷24,0	46	16	2
AN738.735.92 <sup>(2)</sup>	SS	NPT 1 1/4"	2	43	48	22,0÷27,0÷31,0	48	16	2
AN738.738.92 <sup>(2)</sup>	SS	NPT 1 1/2"	2	43	55	22,0÷27,0÷31,0	50	18	2
AN738.740.92 <sup>(2)</sup>	SS	NPT 1 1/2"	2	53	55	29,5÷35,0÷40,0	64	18	2

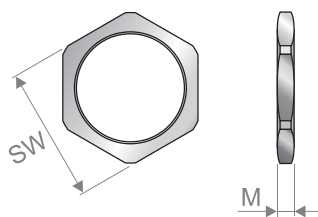
(1) Certificato c(UL)us Recognized (ccn QCRV2, QCRV8). / c(UL)us Recognized certified (ccn QCRV2, QCRV8).

(2) Certificato c(UL)us Listed (ccn QCRV, QCRV7). / c(UL)us Listed certified (ccn QCRV, QCRV7).

(3) Valore intermedio di passaggio ad un solo elemento di guarnizione. / Intermediate value of passage to a single sealing ring.

Legenda materiali: SS = Acciaio inossidabile, NPB = Ottone nichelato  
Materials' description: SS = Stainless steel, NPB = Nickel-plated brass

## Ghiera sottile - Thin lock nut



Codice Code	Filetto Thread	Chiave di serraggio Tightening key [mm]	Dimensioni Sizes [mm]	Confezione Packaging [pz]
		SW	M	
PCFM10_M016X	M16x1,5	19	3,0	100
PCFM10_M020X	M20x1,5	24	3,5	100
PCFM10_M025X	M25x1,5	30	4,0	50
PCFM10_M032X	M32x1,5	36	4,0	25
PCFM10_M040X	M40x1,5	46	5,0	25
PCFM10_M050X	M50x1,5	55	5,5	10

Materiale: Ottone nichelato  
Materials: Nickel-plated brass