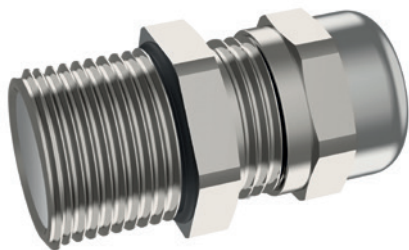


Pressacavo per cavi TC



Cable glands for TC cables

For use in Ordinary Locations and Class/Division/Zone and Atex Hazardous Locations – “UL/CSA Listed”



Impiego - Use

Questi pressacavo sono progettati per l'uso con Tray Cable (TC, TC-ER, TC-ER-HL) in ordinary locations, per installazioni elettriche industriali e civili, quali quadri elettrici, involucri e apparecchiature, nonché per applicazioni in ambienti in cui il rischio di esplosione dovuto alla presenza di gas infiammabili o vapori combustibili è limitato a condizioni anormali o accidentali (Class I Division 2 / Zone 2), limitatamente alle versioni espressamente certificate per tali ambienti.

I pressacavo contribuiscono a mantenere il grado di protezione dell'involucro, impedendo l'ingresso di polveri, umidità e agenti esterni. Sono realizzati in ottone nichelato, acciaio inossidabile AISI 316 e alluminio. Il sistema di tenuta è basato su guarnizioni elastomeriche che assicurano il corretto serraggio e la tenuta sul cavo. Le versioni per hazardous locations sono certificate c(UL)us per Class I Division 2 e ATEX / IECEx per Zone 2, risultando idonee all'impiego in aree con presenza occasionale di atmosfera esplosiva.

These cable glands are designed for use with Tray Cables (TC, TC-ER, TC-ER-HL) in ordinary locations, for industrial and commercial electrical installations such as control panels, enclosures, and equipment, as well as for applications in environments where the risk of explosion due to the presence of flammable gases or combustible vapors is limited to abnormal or accidental conditions (Class I Division 2 / Zone 2), limited to the versions specifically certified for such environments. The cable glands help maintain the degree of protection of the enclosure by preventing the ingress of dust, moisture, and external agents. They are manufactured in nickel-plated brass, AISI 316 stainless steel, and aluminum. The sealing system is based on elastomeric gaskets that ensure proper tightening and effective sealing on the cable. Versions intended for hazardous locations are c(UL)us certified for Class I Division 2 and ATEX / IECEx certified for Zone 2, making them suitable for use in areas with an occasional presence of explosive atmospheres.



Dati tecnici - Technical data

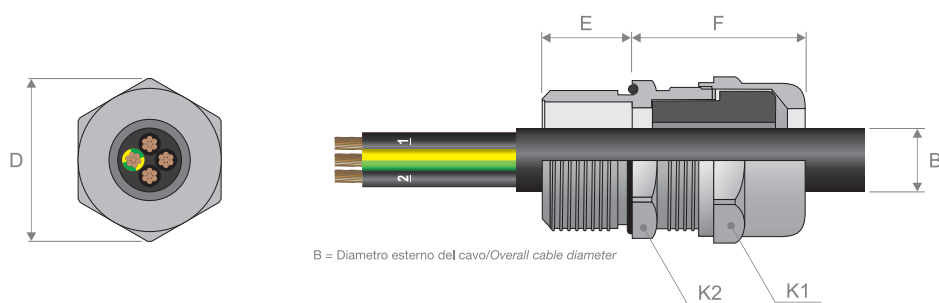
Caratteristica - Characteristics	Valore/proprietà - Value/property
Materiale <i>Material</i>	Ottone nichelato, acciaio inossidabile AISI 316L o alluminio <i>Nickel-plated brass, AISI 316L stainless steel or aluminum</i>
Materiale dell'anello di tenuta <i>Sealing ring material</i>	Cloroprene, composta da tre elementi concentrici, tenuta stagna sulla guaina esterna <i>Chloroprene, made of 3 concentric elements, watertight seal on outer sheath of cable</i>
Materiale dell'oring <i>O-ring material</i>	Cloroprene <i>Chloroprene</i>
Cavi compatibili <i>Compatible cables</i>	Cavi non armati TC, TC-ER e TC-ER-HL. Tabella di accoppiamento cavo/pressacavo in Appendice R2. <i>Unarmored TC, TC-ER and TC-ER-HL cables. Cable/cable gland matching table in Appendix R2.</i>
Temperatura di esercizio <i>Temperature range</i>	-40°C, +80°C
Grado di protezione ⁽¹⁾ <i>Protection class⁽¹⁾</i>	UL Type 4X IP66, IP68 ⁽²⁾
Riferimenti normativi costruttivi <i>Standards of construction</i>	EN/IEC 62444, ISO 965-1, ISO 965-3, ASME B1.20.1 EN/IEC 60079-0, -1, -7, -31 UL 50E, UL 514B (ccn QPOZ, QPOZ2), UL 2225 (ccn CYMJ, CYMJ7) UL/ANSI 60079-0, -7, -31 CSA C22.2 N. 18.3, N. 94.2, N. 14 CSA C22.2 N. 60079-0, -7, -31
Riferimenti normativi d'impiego <i>Standards of use</i>	NPFA 70 (NEC), NFPA 79, UL 508a CSA C22.1 (CE Code), CSA C22.2 N.301, CSA C22.2 N.286 ATEX: II 2GD, Ex db IIC Gb, Ex eb IIC Gb, Ex tb IIIC Db IECEx: Ex db IIC Gb, Ex eb IIC Gb, Ex tb IIIC Db (UL)us: Class I, Div 2, Groups C, D ⁽³⁾ ; Zone 1, AEx e IIC Gb; Zone 21, AEx tb IIIC Db; Zone 2, AEx e IIC Gc; Zone 22, AEx tc IIIC Dc; Zone 22, AEx tc IIIC c(UL): Class I, Div 2, Groups C, D ⁽³⁾ ; Zone 1, Ex e IIC Gb; Zone 21, Ex tb IIIC Db; Zone 2, Ex e IIC Gc; Zone 22, Ex tc IIIC Dc; Zone 21, Ex tb IIIC Db Others: 2014/34/UE ATEX

(1) Solo se installati con accessori originali. / Only if installed with original accessories.

(2) IP68 testato a 5 bar per 30 min. / IP68 tested at 5 bar for 30 min.

(3) I pressacavi sono certificati secondo la norma UL 2225 e marcati con protezione di tipo "e" (increased safety) e sono ammessi all'impiego in aree classificate Class I, Division 2, in conformità al NEC Articolo 501. / Cable glands are certified according to UL 2225 and marked with protection type "e" and are permitted for use in Class I, Division 2.

Codifiche e dimensioni - Coding and dimensions



Codice Code	Materiale Material	Filetto Thread	Dimensioni Sizes [mm (inch)]						
			B		D	K1	K2	E	F
			Min	Max					
PCM800_M016X0100N ⁽²⁾⁽³⁾	ON	M16 X 1.5	4,0 (0,157)	12,0 (0,472)	24,5 (0,965)	22,0 (0,866)	22,0 (0,866)	16,0 (0,630)	33,0 (1,299)
PCM800_M020X0100N ⁽¹⁾⁽³⁾	ON	M20 X 1.5	4,0 (0,157)	12,0 (0,472)	24,5 (0,965)	22,0 (0,866)	22,0 (0,866)	16,0 (0,630)	29,0 (1,142)
PCM800_M025X0100N ⁽³⁾	ON	M25 X 1.5	4,0 (0,157)	12,0 (0,472)	31,0 (1,220)	22,0 (0,866)	28,0 (1,102)	16,0 (0,630)	29,0 (1,142)
PCM800_M025X0200N ⁽¹⁾⁽³⁾	ON	M25 X 1.5	10,0 (0,394)	18,0 (0,709)	31,0 (1,220)	28,0 (1,102)	28,0 (1,102)	16,0 (0,630)	32,5 (1,280)
PCM800_M032X0100N ⁽³⁾	ON	M32 X 1.5	10,0 (0,394)	18,0 (0,709)	39,0 (1,535)	28,0 (1,102)	35,0 (1,378)	16,0 (0,630)	32,5 (1,280)
PCM800_M032X0200N ⁽¹⁾⁽³⁾	ON	M32 X 1.5	14,0 (0,551)	24,0 (0,945)	39,0 (1,535)	35,0 (1,378)	35,0 (1,378)	16,0 (0,630)	35,0 (1,378)
PCM800_M040X0100N ⁽³⁾	ON	M40 X 1.5	14,0 (0,551)	24,0 (0,945)	49,5 (1,949)	35,0 (1,378)	45,0 (1,772)	18,0 (0,709)	35,0 (1,378)
PCM800_M040X0200N ⁽¹⁾⁽³⁾	ON	M40 X 1.5	22,0 (0,866)	32,0 (1,260)	49,5 (1,949)	45,0 (1,772)	45,0 (1,772)	18,0 (0,709)	42,5 (1,673)
PCM800_M050X0100N ⁽³⁾	ON	M50 X 1.5	22,0 (0,866)	32,0 (1,260)	61,0 (2,402)	45,0 (1,772)	55,0 (2,165)	18,0 (0,709)	42,5 (1,673)
PCM800_M050X0200N ⁽¹⁾⁽³⁾	ON	M50 X 1.5	26,0 (1,024)	35,0 (1,378)	61,0 (2,402)	50,0 (1,969)	55,0 (2,165)	18,0 (0,709)	45,5 (1,791)
PCM800_M050X0300N ⁽¹⁾⁽³⁾	ON	M50 X 1.5	35,0 (1,378)	44,0 (1,732)	70,0 (2,756)	64,0 (2,520)	64,0 (2,520)	18,0 (0,709)	45,0 (1,772)
PCM800_M063X0100N ⁽¹⁾⁽³⁾	ON	M63 X 1.5	35,0 (1,378)	45,0 (1,772)	75,0 (2,953)	64,0 (2,520)	68,0 (2,677)	18,0 (0,709)	45,0 (1,772)
PCM800_N050X0100N ⁽¹⁾	ON	NPT 1/2"	4,0 (0,157)	12,0 (0,472)	24,5 (0,965)	22,0 (0,866)	22,0 (0,866)	16,0 (0,630)	29,0 (1,142)
PCM800_N075X0200N ⁽¹⁾	ON	NPT 3/4"	10,0 (0,394)	18,0 (0,709)	31,0 (1,220)	28,0 (1,102)	28,0 (1,102)	16,0 (0,630)	32,0 (1,260)
PCM800_N100X0200N ⁽¹⁾	ON	NPT 1"	14,0 (0,551)	24,0 (0,945)	39,0 (1,535)	35,0 (1,378)	35,0 (1,378)	20,0 (0,787)	35,0 (1,378)
PCM800_N125X0200N ⁽¹⁾	ON	NPT 1"1/4	22,0 (0,866)	32,0 (1,260)	49,5 (1,949)	45,0 (1,772)	45,0 (1,772)	20,0 (0,787)	42,5 (1,673)
PCM800_N150X0200N ⁽¹⁾	ON	NPT 1"1/2	26,0 (1,024)	35,0 (1,378)	61,0 (2,402)	50,0 (1,969)	55,0 (2,165)	20,0 (0,787)	45,5 (1,791)
PCM800_N150X0300N ⁽¹⁾	ON	NPT 1"1/2	35,0 (1,378)	41,0 (1,614)	70,0 (2,756)	64,0 (2,520)	64,0 (2,520)	20,0 (0,787)	44,0 (1,732)
PCM800_M016X010A6 ⁽²⁾⁽³⁾	A6	M16 X 1.5	4,0 (0,157)	12,0 (0,472)	24,5 (0,965)	22,0 (0,866)	22,0 (0,866)	16,0 (0,630)	33,0 (1,299)
PCM800_M020X010A6 ⁽¹⁾⁽³⁾	A6	M20 X 1.5	4,0 (0,157)	12,0 (0,472)	24,5 (0,965)	22,0 (0,866)	22,0 (0,866)	16,0 (0,630)	29,0 (1,142)
PCM800_M025X010A6 ⁽³⁾	A6	M25 X 1.5	4,0 (0,157)	12,0 (0,472)	31,0 (1,220)	22,0 (0,866)	28,0 (1,102)	16,0 (0,630)	29,0 (1,142)
PCM800_M025X020A6 ⁽¹⁾⁽³⁾	A6	M25 X 1.5	10,0 (0,394)	18,0 (0,709)	31,0 (1,220)	28,0 (1,102)	28,0 (1,102)	16,0 (0,630)	32,5 (1,280)
PCM800_M032X010A6 ⁽³⁾	A6	M32 X 1.5	10,0 (0,394)	18,0 (0,709)	39,0 (1,535)	28,0 (1,102)	35,0 (1,378)	16,0 (0,630)	32,5 (1,280)
PCM800_M032X020A6 ⁽¹⁾⁽³⁾	A6	M32 X 1.5	14,0 (0,551)	24,0 (0,945)	39,0 (1,535)	35,0 (1,378)	35,0 (1,378)	16,0 (0,630)	35,0 (1,378)
PCM800_M040X010A6 ⁽³⁾	A6	M40 X 1.5	14,0 (0,551)	24,0 (0,945)	49,5 (1,949)	35,0 (1,378)	45,0 (1,772)	18,0 (0,709)	35,0 (1,378)

Raccordi e sistemi passacavo - Fittings and cable entry systems

Codice Code	Materiale Material	Filetto Thread	Dimensioni Sizes [mm (inch)]						
			B		D	K1	K2	E	F
			Min	Max					
PCM800_M040X020A6 ⁽¹⁾⁽³⁾	A6	M40 X 1.5	22,0 (0,866)	32,0 (1,260)	49,5 (1,949)	45,0 (1,772)	45,0 (1,772)	18,0 (0,709)	42,5 (1,673)
PCM800_M050X010A6 ⁽³⁾	A6	M50 X 1.5	22,0 (0,866)	32,0 (1,260)	61,0 (2,402)	45,0 (1,772)	55,0 (2,165)	18,0 (0,709)	42,5 (1,673)
PCM800_M050X020A6 ⁽¹⁾⁽³⁾	A6	M50 X 1.5	26,0 (1,024)	35,0 (1,378)	61,0 (2,402)	50,0 (1,969)	55,0 (2,165)	18,0 (0,709)	45,5 (1,791)
PCM800_M050X030A6 ⁽¹⁾⁽³⁾	A6	M50 X 1.5	35,0 (1,378)	44,0 (1,732)	70,0 (2,756)	64,0 (2,520)	64,0 (2,520)	18,0 (0,709)	45,0 (1,772)
PCM800_M063X010A6 ⁽¹⁾⁽³⁾	A6	M63 X 1.5	35,0 (1,378)	45,0 (1,772)	75,0 (2,953)	64,0 (2,520)	68,0 (2,677)	18,0 (0,709)	45,0 (1,772)
PCM800_N050X010A6 ⁽¹⁾	A6	NPT 1/2"	4,0 (0,157)	12,0 (0,472)	24,5 (0,965)	22,0 (0,866)	22,0 (0,866)	16,0 (0,630)	29,0 (1,142)
PCM800_N075X020A6 ⁽¹⁾	A6	NPT 3/4"	10,0 (0,394)	18,0 (0,709)	31,0 (1,220)	28,0 (1,102)	28,0 (1,102)	16,0 (0,630)	32,0 (1,260)
PCM800_N100X020A6 ⁽¹⁾	A6	NPT 1"	14,0 (0,551)	24,0 (0,945)	39,0 (1,535)	35,0 (1,378)	35,0 (1,378)	20,0 (0,787)	35,0 (1,378)
PCM800_N125X020A6 ⁽¹⁾	A6	NPT 1"1/4	22,0 (0,866)	32,0 (1,260)	49,5 (1,949)	45,0 (1,772)	45,0 (1,772)	20,0 (0,787)	42,5 (1,673)
PCM800_N150X020A6 ⁽¹⁾	A6	NPT 1"1/2	26,0 (1,024)	35,0 (1,378)	61,0 (2,402)	50,0 (1,969)	55,0 (2,165)	20,0 (0,787)	45,5 (1,791)
PCM800_N150X030A6 ⁽¹⁾	A6	NPT 1"1/2	35,0 (1,378)	41,0 (1,614)	70,0 (2,756)	64,0 (2,520)	64,0 (2,520)	20,0 (0,787)	44,0 (1,732)
PCM800_M016X010AL ⁽²⁾⁽³⁾	AL	M16 X 1.5	4,0 (0,157)	12,0 (0,472)	24,5 (0,965)	22,0 (0,866)	22,0 (0,866)	16,0 (0,630)	33,0 (1,299)
PCM800_M020X010AL ⁽¹⁾⁽³⁾	AL	M20 X 1.5	4,0 (0,157)	12,0 (0,472)	24,5 (0,965)	22,0 (0,866)	22,0 (0,866)	16,0 (0,630)	29,0 (1,142)
PCM800_M025X010AL ⁽³⁾	AL	M25 X 1.5	4,0 (0,157)	12,0 (0,472)	31,0 (1,220)	22,0 (0,866)	28,0 (1,102)	16,0 (0,630)	29,0 (1,142)
PCM800_M025X020AL ⁽¹⁾⁽³⁾	AL	M25 X 1.5	10,0 (0,394)	18,0 (0,709)	31,0 (1,220)	28,0 (1,102)	28,0 (1,102)	16,0 (0,630)	32,5 (1,280)
PCM800_M032X010AL ⁽³⁾	AL	M32 X 1.5	10,0 (0,394)	18,0 (0,709)	39,0 (1,535)	28,0 (1,102)	35,0 (1,378)	16,0 (0,630)	32,5 (1,280)
PCM800_M032X020AL ⁽¹⁾⁽³⁾	AL	M32 X 1.5	14,0 (0,551)	24,0 (0,945)	39,0 (1,535)	35,0 (1,378)	35,0 (1,378)	16,0 (0,630)	35,0 (1,378)
PCM800_M040X010AL ⁽³⁾	AL	M40 X 1.5	14,0 (0,551)	24,0 (0,945)	49,5 (1,949)	35,0 (1,378)	45,0 (1,772)	18,0 (0,709)	35,0 (1,378)
PCM800_M040X020AL ⁽¹⁾⁽³⁾	AL	M40 X 1.5	22,0 (0,866)	32,0 (1,260)	49,5 (1,949)	45,0 (1,772)	45,0 (1,772)	18,0 (0,709)	42,5 (1,673)
PCM800_M050X010AL ⁽³⁾	AL	M50 X 1.5	22,0 (0,866)	32,0 (1,260)	61,0 (2,402)	45,0 (1,772)	55,0 (2,165)	18,0 (0,709)	42,5 (1,673)
PCM800_M050X020AL ⁽¹⁾⁽³⁾	AL	M50 X 1.5	26,0 (1,024)	35,0 (1,378)	61,0 (2,402)	50,0 (1,969)	55,0 (2,165)	18,0 (0,709)	45,5 (1,791)
PCM800_M050X030AL ⁽¹⁾⁽³⁾	AL	M50 X 1.5	35,0 (1,378)	44,0 (1,732)	70,0 (2,756)	64,0 (2,520)	64,0 (2,520)	18,0 (0,709)	45,0 (1,772)
PCM800_M063X010AL ⁽¹⁾⁽³⁾	AL	M63 X 1.5	35,0 (1,378)	45,0 (1,772)	75,0 (2,953)	64,0 (2,520)	68,0 (2,677)	18,0 (0,709)	45,0 (1,772)
PCM800_N050X010AL ⁽¹⁾	AL	NPT 1/2"	4,0 (0,157)	12,0 (0,472)	24,5 (0,965)	22,0 (0,866)	22,0 (0,866)	16,0 (0,630)	29,0 (1,142)
PCM800_N075X020AL ⁽¹⁾	AL	NPT 3/4"	10,0 (0,394)	18,0 (0,709)	31,0 (1,220)	28,0 (1,102)	28,0 (1,102)	16,0 (0,630)	32,0 (1,260)
PCM800_N100X020AL ⁽¹⁾	AL	NPT 1"	14,0 (0,551)	24,0 (0,945)	39,0 (1,535)	35,0 (1,378)	35,0 (1,378)	20,0 (0,787)	35,0 (1,378)
PCM800_N125X020AL ⁽¹⁾	AL	NPT 1"1/4	22,0 (0,866)	32,0 (1,260)	49,5 (1,949)	45,0 (1,772)	45,0 (1,772)	20,0 (0,787)	42,5 (1,673)
PCM800_N150X020AL ⁽¹⁾	AL	NPT 1"1/2	26,0 (1,024)	35,0 (1,378)	61,0 (2,402)	50,0 (1,969)	55,0 (2,165)	20,0 (0,787)	45,5 (1,791)
PCM800_N150X030AL ⁽¹⁾	AL	NPT 1"1/2	35,0 (1,378)	41,0 (1,614)	70,0 (2,756)	64,0 (2,520)	64,0 (2,520)	20,0 (0,787)	44,0 (1,732)

Legenda materiali: ON = Ottone nichelato, A6 = Acciaio inossidabile AISI 316L, AL = Alluminio
Materials' description: ON = Nickel-plated brass, A6 = AISI 316L stainless steel, AL = Aluminum

(1) Pressacavo per ordinary locations e Class/Division/Zone hazardous locations - certificazione UL Listed (ccn QPOZ) e c(UL)us Listed (ccn CYMJ, CYMJ7).

(2) Pressacavo per ordinary locations - certificazione UL Recognized (ccn QPOZ2).

(3) Pressacavo per zone a pericolo di esplosione - certificazione ATEX/IECEX.

- Non sono incluse ghiera, fornite separatamente.

- Per le tolleranze produttive a cui sono soggetti i cavi elettrici si suggerisce di scegliere il pressacavo corretto misurando il diametro minimo e massimo del cavo da installare.

(1) Cable gland for ordinary locations and Class/Division/Zone hazardous locations – UL Listed (ccn QPOZ) and c(UL)us Listed (ccn CYMJ, CYMJ7) certified.

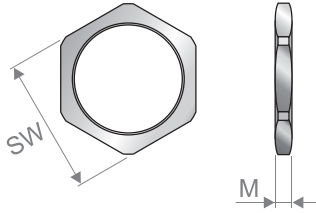
(2) Cable gland for ordinary locations – UL Recognized (ccn QPOZ2) certified.

(3) Cable gland for explosive hazardous areas – ATEX/IECEx certified.

- Locknuts are not included, provided separately.

- Due to the production tolerances to which electrical cables are subject, it is recommended to choose the correct cable gland by measuring the minimum and maximum diameter of the cable to be installed.

Ghiera esagonale - Lock nut



Codice Code	Materiale Material	Filetto Thread	Chiave di serraggio Tightening key [mm (inch)]	Dimensioni Sizes [mm (inch)]
			SW	M
PCFM10_M016X	ON	M16x1,5	19,0 (0,748)	3,0 (0,118)
PCFM10_M020X	ON	M20x1,5	24,0 (0,945)	3,5 (0,138)
PCFM10_M025X	ON	M25x1,5	30,0 (1,181)	4,0 (0,157)
PCFM10_M032X	ON	M32x1,5	36,0 (1,417)	4,0 (0,157)
PCFM10_M040X	ON	M40x1,5	46,0 (1,811)	5,0 (0,197)
PCFM10_M050X	ON	M50x1,5	55,0 (2,165)	5,5 (0,217)
PCFM10_M063X	ON	M63x1,5	70,0 (2,756)	6,0 (0,236)
PCFM11_N050XON	ON	NPT 1/2"	24,0 (0,945)	5,0 (0,197)
PCFM11_N075XON	ON	NPT 3/4"	34,0 (1,339)	6,0 (0,236)
PCFM11_N100XON	ON	NPT 1"	42,0 (1,654)	6,0 (0,236)
PCFM11_N125XON	ON	NPT 1"1/4	52,0 (2,047)	7,0 (0,276)
PCFM11_N150XON	ON	NPT 1"1/2	60,0 (2,362)	7,0 (0,276)
PCFM10_M016XA6	A6	M16x1,5	19,0 (0,748)	3,0 (0,118)
PCFM10_M020XA6	A6	M20x1,5	24,0 (0,945)	3,5 (0,138)
PCFM10_M025XA6	A6	M25x1,5	30,0 (1,181)	3,5 (0,138)
PCFM10_M032XA6	A6	M32x1,5	36,0 (1,417)	4,5 (0,177)
PCFM10_M040XA6	A6	M40x1,5	46,0 (1,811)	4,5 (0,177)
PCFM10_M050XA6	A6	M50x1,5	55,0 (2,165)	5,5 (0,217)
PCFM10_M063XA6	A6	M63x1,5	70,0 (2,756)	6,0 (0,236)
PCFM11_N050XA6	A6	NPT 1/2"	24,0 (0,945)	5,0 (0,197)
PCFM11_N075XA6	A6	NPT 3/4"	35,0 (1,378)	6,0 (0,236)
PCFM11_N100XA6	A6	NPT 1"	46,0 (1,811)	6,0 (0,236)
PCFM11_N125XA6	A6	NPT 1"1/4	55,0 (2,165)	7,0 (0,276)
PCFM11_N150XA6	A6	NPT 1"1/2	60,0 (2,362)	7,0 (0,276)

Legenda materiali: ON = Ottone nichelato, A6 = Acciaio inossidabile AISI 316L

Materials' description: ON = Nickel-plated brass, A6 = AISI 316L stainless steel

Composizione del codice - Code composition

PC		-		X		Materiale Material	Inserire To be inserted
Famiglia Family	Inserire To be inserted	Versione Version	Inserire To be inserted	Filetto Thread	Inserire To be inserted	Ottone nichelato Nickel-plated brass	ON
Pressacavo Cable gland	M800	Metrica Metric	M	M16, M20, ..., M100	016, 020, ..., 100	Acciaio inossidabile AISI 316L AISI 316L stainless steel	A6
Ghiera Lock nut	FM10, FM11	NPT	N	NPT 1/2", 3/4", ..., 4"	050, 075, ..., 400	Alluminio Aluminum	AL
Range di diametri Diameter range							
Codice identificativo del range di diametri di accoppiamento. Code depending on the cable range.							